

Societal Cost of Multiple Sclerosis 2015



9,000
people with MS

92% experience fatigue due to MS

41% say they relapsed in the last year

33% diagnosed with depression



People with MS require a lot of care

- 54,000 GP visits/year
- 16,450 nights in hospital
- 1,544 emergency department visits (not admitted)
- 7,600 visits from MS Ireland caseworkers

21,800
Neurology visits
per year

MS is associated with HIGH costs.

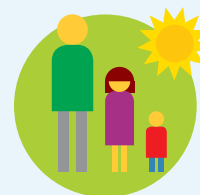
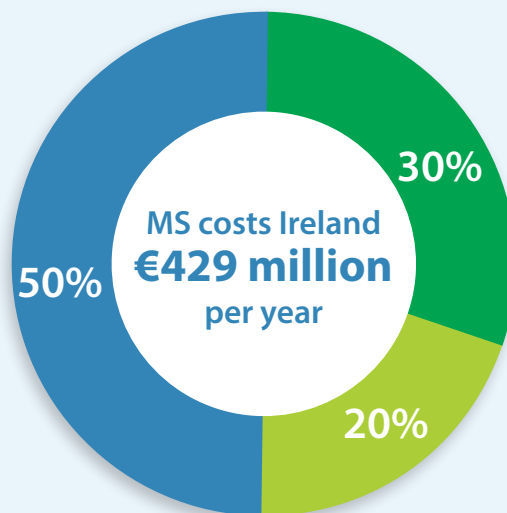
Most of these are *OUTSIDE* the healthcare system.



Direct cost
(e.g. hospitals, doctors, medication)

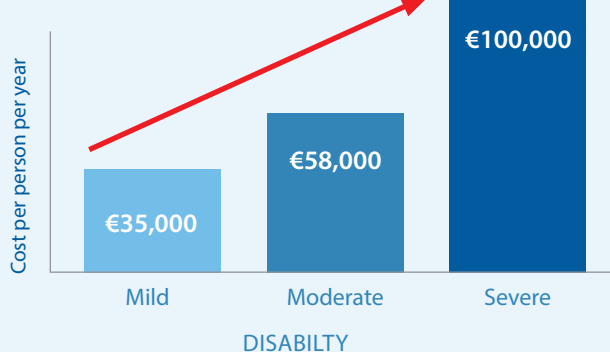
Indirect costs

(e.g. time off work, carers)



Intangible costs
(e.g. quality of life)

Disability progression associated with increased costs:



Cost of relapses in Ireland:

€16.9 million

Estimated savings from relapses avoided:

up to **€10 million**

Estimated savings from delayed disability:

up to **€19 million**

MS: A chronic disabling disease affecting people in their prime of life

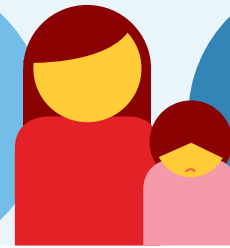
Treatment & disease management can improve the ability of people to remain employed

- 7 out of 10 employees say MS has limited their career potential
- 34% of employees had to **REDUCE** working hours
- 900,000 days lost due to stopping work, absenteeism and presenteeism



MS is a disease of **ADULTS** but **CHILDREN** are affected

61%
feel they can't financially provide for their children



73%
of children worry about parents' health

Quality of Life is rated **32% less**

than for the general population and is lower in men than women

Recommendations

1. Access to interventions that reduce relapses and disability progression, support working and living independently
2. Improving employment opportunities

